



**Nana's  
House**

**WE ARE CELEBRATING 17 YEARS SERVING CHILDREN!!**



*For in the day of trouble he will keep me  
safe in his dwelling.*

*He will hide me in the shelter of his  
tabernacle and set me high upon a rock.*

*Psalm 27:5*

*Our mission is to provide a safe, secure,  
loving Christian home for neglected,  
abused, needy, or abandoned children.*

3492 God's Way  
West Melbourne, FL 32904  
321-724-5111  
[www.nanaschildrenshome.com](http://www.nanaschildrenshome.com)  
[nanashouse3492@gmail.com](mailto:nanashouse3492@gmail.com)



## WHO WE ARE



- **501(C)(3) ORGANIZATION – DEPENDS SOLELY ON GENEROSITY OF COMMUNITY – 100% DONATIONS / 100% VOLUNTEERS**
- **IN PARTNERSHIP WITH **ONE MORE CHILD**, WE PROVIDE SAFE, LOVING HOMES AND WRAP AROUND SERVICES FOR FOSTER FAMILIES (On Campus and Off Campus)**
- **CAMPUS COMMUNITY CONSISTS OF: EIGHT (8) HOMES , COMMUNITY CENTER, POOL, PAVILION, GARDEN, PLAYGROUND AND “STOP & SHOP”. CURRENTLY HAVE 13 HOMES LICENSED AND 3 MORE COUPLES IN LICENSING PROCESS**
- **64 Total children served in 2024**



## **WHO WE SERVE**



- **CHILDREN AND YOUTH ( 0-18 years)**

The children on our community campus live in a beautiful, fully furnished home with licensed Christian foster parents and at least five children per home. Our goal is to offer safe, secure, loving homes where children experience God's love and healing.

- **FOSTER PARENTS**

Nana's House / One More Child licensed foster parents are offered wrap around support. In Community – free housing, utilities, Wi-Fi, access to minivans (as available) and all resources & facilities on campus. Off campus homes have access to all facilities & resources on campus.



# Nana's House

919 Commerce Street SE, Palm Bay

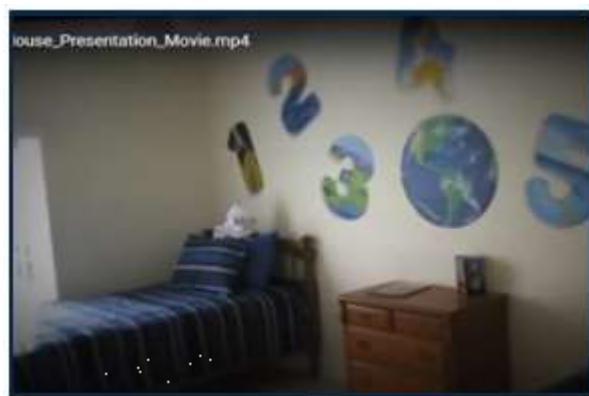
First Nana's House foster home purchased and ready to renovate!!



*For in the day of trouble  
He will keep me safe in  
His dwelling. He will hide  
me in the shelter of His  
tabernacle and set me  
high upon a rock.*

*Psalm 27:5*

**Nana's House**  
**919 Commerce Street SE, Palm Bay**  
**First Nana's House foster home completed!!**



*I will both lie down in peace, and sleep;  
For You alone, O Lord, make me dwell in safety. Psalm 4:8*



## NANA'S HOUSE THRIFT COTTAGES THROUGH THE YEARS



THRIFT  
COTTAGE  
#1



THRIFT  
COTTAGE  
#2

**CURRENT NANA'S HOUSE THRIFT STORE —  
4490 S BABCOCK ST, MELBOURNE**





# NANA'S HOUSE COMMUNITY LAND DEDICATION – 2014 GROUNDBREAKING - 2016



See the LORD,  
your God has given  
you the land. Go  
up and take  
possession of it as  
the LORD, the God  
of your fathers, told  
you. Do not be  
afraid; do not be  
discouraged.





# NANA'S HOUSE COMMUNITY IS DEDICATED AND OPEN TO SERVE THE CHILDREN OF BREVARD COUNTY!! 2018



Through the praise of children, and infants, you have established a stronghold against your enemies, to silence the foe and the avenger. Psalm 8:2





NANA'S HOUSE COMMUNITY TODAY 2024



*Taste and See that the LORD is good. Psalm 34:8*





# NANA'S HOUSE COMMUNITY

**For I know the plans I have for you, declares the LORD, plans for welfare and not for evil, to give you a future and a hope.**

***Jeremiah 29:11***

God's Way





# HOW CAN YOU HELP?

CONTRACTOR	MIKE -MH WILLIAMS CONSTRUCTION
BLUE PRINTS	ACE BLUE PRINTS (MARK)
ARCHITECT	CAG ARCHITECT - JUSTO
ASPHALT / Sealing & Striping	DNE Asphalt Services
ASPHALT MATERIAL / PARKING LOT	PREFERRED MATERIALS ASPHALT - KEVIN PRICE
PARKING LOT / PAVING CONTRACTOR	KODY YOUTZY ASPHALT
PARKING LOT / BASE MATERIAL	STAVOLO AGGREGATE SUPPLY - LENA
BLOCK / STEEL LABOR	HAMILTON MASONRY ( GRAY HAMILTON)
BLOCK MATERIAL	HAMILTON MASONRY ( GRAY HAMILTON)
CIVIL ENGINEER	Bruce Moia - MBV ENGINEERING
CLEANING	
COMPACTION TEST	KSM ENGINEERING - ES
CONCRETE LABOR	JAKE - SHEEPDOG CONCRETE
CONCRETE MATERIAL	JAKE - SHEEPDOG CONCRETE
CONCRETE PUMPING / MASONRY	
CONSTRUCTION ENGINEER M&P	FSM ENGINEERING - BRANDON KLENCK



**We love  
DIRT!!!  
NEED  
MORE!!!**







DRYWALL LABOR	BREVARD FRAMING & DRYWALL
DRYWALL MATERIAL	JIM MCBRIDE - FBM MATERIALS
DUMPSTERS	AARON - EXPRESS ROLL OFF DUMPSTERS
ELECTRIC	CHRIS - EAU GALLIE ELECTRIC
ELECTRICAL ENGINEER	EAU GALLIE ELECTRIC
FLOORING (CONCRETE EXPOXY FINISH - GARAGE)	
FRAMING LABOR	STEVE JOHN FRITZON CARPENTRY INC
FRAMING MATERIAL	
GLASS WINDOWS	EAST COAST ARCHITECTURAL GLASS - CHASE
GARAGE DOORS	OMEGA GARAGE DOORS (DUANE WRIGHT)
FILL DIRT	STAVOLA AGGREGATE SUPPLY - LENA
GRADING / SITE WORK	WOODS LAND MANAGEMENT - JORDAN
ROLLER EQUIPMENT (COMPACTION)	HE EQUIPMENT - Tim Strange
SITE WORK/ UNDERGROUND UTILITES (WARREN)	WP UNDERGROUND UTILITIES
SITE WORK MATERIAL	
SITE WORK - TREE ROOT REMOVAL	YOUTZY LAND DEVELOPMENT, INC (KASEY)
SITE WORK DIRT	
SITE WORK HAULING	JOHN HARRIS / ZACH - RYAN UTILITIES
STEEL BEAMS	
HVAC	FLORIDA BREEZE (STEVE)
INSULATION	J & T INSULATION (JEREMIAH)
INTERIOR DESIGN/ DECORATOR	KIM FRODGE
IRRIGATION / WELL	JOSH MOORE - BLUE H2O
LANDSCAPE - PLANTS	FOUR C'S NURSERY (MIKE)
LANDSCAPE -LABOR	FOUR C'S NURSERY (MIKE)





Licensed Insured  
**WOODS**  
LAND MANAGEMENT





LIGHT FIXTURES	
LINTELS / PRECAST	LOTT'S CONCRETE (CHAYE)
LUMBER / CONSTR HARDWARE	
PAINT LABOR	REGAL CUSTOM PAINTING (ANGIE)
PAINT MATERIAL	
ROOFING	SUPERIOR ONE ROOFING (CHRIS THOMAS)
SOD LABOR	BONNIE'S SOD
SOD	
SOFFIT	
STRUCTURAL ENGINEER	TOM ADAMS - Adams Engineering 321-626-7654
STRUCTURAL STEEL	
STUCCO	
SURVEYING	BRUNNER - HAGEN INC SURVEYORS
TREE REMOVAL	SEMAN'S TREE SERVICE - DYLAN
TRIM & DOORS	MAKO MILLWORK - David Lloyd
TRIM LABOR	
TRUSSES	
CRANE	SIM'S CRANE (DALTON) 813-326-3564
WALKWAYS / CONCRETE/ CURBS	ADVANTAGE CONCRETE (BRIAN)
RESTAURANT	RIVER ROCKS RESTAURANT (MIKE)



# HOW CAN YOU HELP?



## CURRENT NEEDS:

- Skilled labor / contractors / donors – for Thrift Store expansion project
- Legacy Sponsor – Thrift Store sponsorship
- Volunteer Facility Manager – includes housing, utilities and Wi-Fi
- Shade for community playground
- Expanded paver driveway for one of our community homes  
One of our homes has single driveway – would like to widen so both vehicles can park side by side to prevent street parking – “line of sight” – safety of the many children in our community
- Weekly Pick up Crew @ our Thrift Store
- Consistent needs: car seats, diapers, pull-ups (3T-4T), wipes, laundry detergent, dishwasher detergent, paper products (paper plates, napkins, toilet paper, etc.), sunscreen (kids), swim diapers, children’s Tylenol, children’s toothpaste





# HOW CAN YOU HELP?

## MEANINGFUL WAYS TO HELP OR GET PLUGGED IN:

### - PRAY

- VOLUNTEER – Thrift Store / Community
- BECOME FOSTER PARENTS
- GIVE – One time gift, monthly support, gift cards, love offering or payroll deduction
- DONATE – Essential supplies like toiletries, diapers, household cleaners, paper products
- PROVIDE MEALS – Directly to family homes or freezer meals
- HOST A FUNDRAISING EVENT
- SPONSOR OPPORTUNITIES – THRIFT STORE SPONSOR – LEGACY SPONSORS
- SHOP @ AMAZON THROUGH OUR WEBSITE or FACEBOOK
- FULFILL NEEDS OR WISH LIST POSTED ON WEBSITE and FACEBOOK
- GIVE A GIFT OF STOCKS, BONDS, MUTUAL FUNDS, REAL ESTATE OR A BEQUEST IN A WILL
- FOLLOW US ON FACEBOOK, INSTAGRAM AND TWITTER





## SUPPORT OUR THRIFT STORE

**100% OF THE PROCEEDS GO TO PROVIDING CARE  
FOR OUR CHILDREN.**

**Location: 4490 S. Babcock Street, Melbourne, FL**

**Hours: Monday thru Saturday 10:00 am to 4:00 pm.**

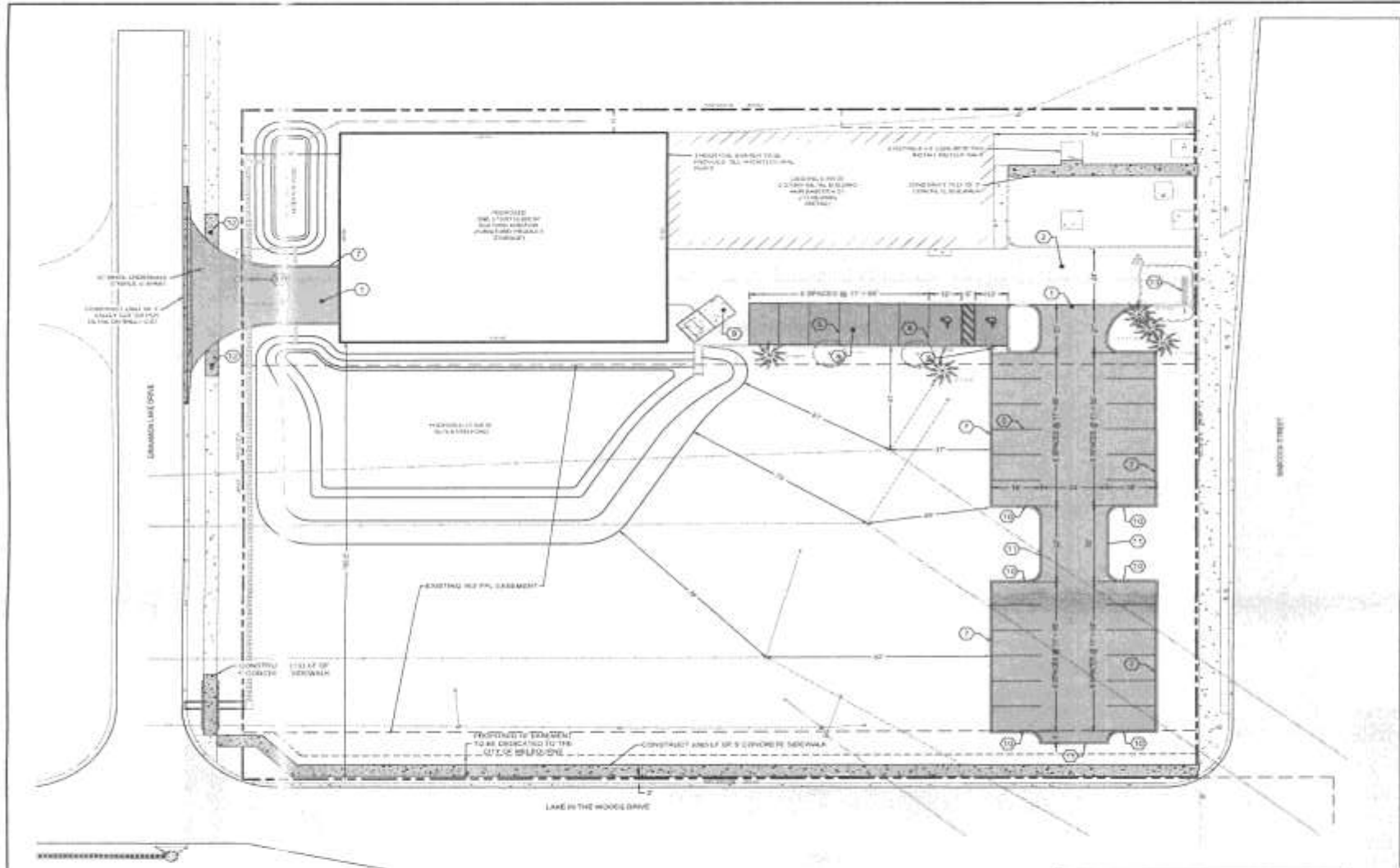
**Closed on Sundays**

**We still need volunteers to help with our Thrift Store as well as consistent, weekly volunteers for pick up crews.**

**Call the Thrift Store at 321-724-5111 option 4 and leave your information. Someone will contact you and get you plugged in!**







**GENERAL STATEMENT**  
 PROJECT IS TO BE CONSTRUCTED IN ACCORDANCE WITH THE CITY OF MELBOURNE, FLORIDA, AND THE STATE OF FLORIDA, AND TO BE IN ACCORDANCE WITH THE CITY OF MELBOURNE, FLORIDA, AND THE STATE OF FLORIDA, AND TO BE IN ACCORDANCE WITH THE CITY OF MELBOURNE, FLORIDA, AND THE STATE OF FLORIDA.

**APPLICANT/OWNER**  
 NAVA'S HOUR THRIFT STORE  
 1000 S. W. 10TH AVENUE  
 MIAMI, FL 33135

**ENGINEER**  
 MBV ENGINEERING, INC.  
 1000 S. W. 10TH AVENUE  
 MIAMI, FL 33135

**SITE ADDRESS**  
 1000 S. W. 10TH AVENUE  
 MIAMI, FL 33135

**SURVEYOR**  
 THE SURVEYOR GENERAL OF FLORIDA  
 1000 S. W. 10TH AVENUE  
 MIAMI, FL 33135

**LAND USE**  
 COMMERCIAL

**ZONING**  
 C-1

**TAX PARCEL ID. NUMBER**  
 1000 S. W. 10TH AVENUE

**TAX ACCOUNT NO.**  
 1000 S. W. 10TH AVENUE

**FLOOD ZONE**  
 THE PROJECT IS NOT IN A FLOOD ZONE.

**SEWAGE TREATMENT PLANT**  
 THE PROJECT IS NOT IN A SEWAGE TREATMENT PLANT AREA.

**SEWAGE TREATMENT PLANT**  
 THE PROJECT IS NOT IN A SEWAGE TREATMENT PLANT AREA.

**PERMITS NEEDED**  
 CITY OF MELBOURNE, FLORIDA  
 1000 S. W. 10TH AVENUE  
 MIAMI, FL 33135

**BUILDING INFORMATION**

DESCRIPTION	AREA	PERCENTAGE
TOTAL AREA	10,000	100%
CONCRETE	5,000	50%
ASPHALT	5,000	50%

**PROJECT INFORMATION**

DESCRIPTION	AREA	PERCENTAGE
TOTAL AREA	10,000	100%
CONCRETE	5,000	50%
ASPHALT	5,000	50%

**BUILDING INFORMATION**

DESCRIPTION	AREA	PERCENTAGE
TOTAL AREA	10,000	100%
CONCRETE	5,000	50%
ASPHALT	5,000	50%

**PAVING INFORMATION**

DESCRIPTION	AREA	PERCENTAGE
TOTAL AREA	10,000	100%
CONCRETE	5,000	50%
ASPHALT	5,000	50%

**THE DATA CALCULATION**  
 THE DATA CALCULATION IS BASED ON THE DATA PROVIDED BY THE APPLICANT AND THE ENGINEER.

- NOTE**
1. THE PROJECT SHALL BE IN ACCORDANCE WITH THE CITY OF MELBOURNE, FLORIDA, AND THE STATE OF FLORIDA.
  2. THE PROJECT SHALL BE IN ACCORDANCE WITH THE CITY OF MELBOURNE, FLORIDA, AND THE STATE OF FLORIDA.
  3. THE PROJECT SHALL BE IN ACCORDANCE WITH THE CITY OF MELBOURNE, FLORIDA, AND THE STATE OF FLORIDA.
  4. THE PROJECT SHALL BE IN ACCORDANCE WITH THE CITY OF MELBOURNE, FLORIDA, AND THE STATE OF FLORIDA.
  5. THE PROJECT SHALL BE IN ACCORDANCE WITH THE CITY OF MELBOURNE, FLORIDA, AND THE STATE OF FLORIDA.
  6. THE PROJECT SHALL BE IN ACCORDANCE WITH THE CITY OF MELBOURNE, FLORIDA, AND THE STATE OF FLORIDA.
  7. THE PROJECT SHALL BE IN ACCORDANCE WITH THE CITY OF MELBOURNE, FLORIDA, AND THE STATE OF FLORIDA.
  8. THE PROJECT SHALL BE IN ACCORDANCE WITH THE CITY OF MELBOURNE, FLORIDA, AND THE STATE OF FLORIDA.
  9. THE PROJECT SHALL BE IN ACCORDANCE WITH THE CITY OF MELBOURNE, FLORIDA, AND THE STATE OF FLORIDA.
  10. THE PROJECT SHALL BE IN ACCORDANCE WITH THE CITY OF MELBOURNE, FLORIDA, AND THE STATE OF FLORIDA.

APPROVED AS NOTED ON COVER PAGE NO CHANGES TO PLAN ARE APPROVED WITHOUT REVIEW AND APPROVAL BY THE CITY OF MELBOURNE ENGINEERING DEPARTMENT PLANS EXPIRE ONE YEAR FROM THE DATE SHOWN ON COVER PAGE

**DRIVEWAY, STEPPING AND RAMPS LEGEND**

1	CONCRETE DRIVEWAY
2	ASPHALT DRIVEWAY
3	EXISTING DRIVEWAY
4	CONCRETE DRIVEWAY
5	ASPHALT DRIVEWAY
6	EXISTING DRIVEWAY
7	CONCRETE DRIVEWAY
8	ASPHALT DRIVEWAY
9	EXISTING DRIVEWAY
10	CONCRETE DRIVEWAY
11	ASPHALT DRIVEWAY
12	EXISTING DRIVEWAY
13	CONCRETE DRIVEWAY
14	ASPHALT DRIVEWAY
15	EXISTING DRIVEWAY

**LEGEND**

- PROPOSED ASPHALT PAVEMENT
- PROPOSED CONCRETE
- EXISTING ASPHALT
- SEAL COAT EXISTING PAVED AREA



**MBV ENGINEERING, INC.**  
 1000 S. W. 10TH AVENUE  
 MIAMI, FL 33135

**DATE**  
 10/10/2023

**REVISIONS**

NO.	DATE	DESCRIPTION
1	10/10/2023	ISSUED FOR PERMIT

**PROJECT INFORMATION**

**PROJECT NAME**  
 NAVA'S HOUR THRIFT STORE

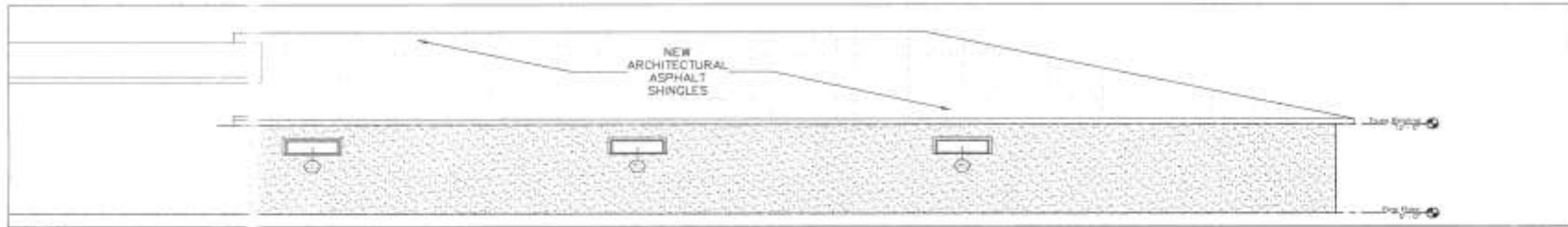
**PROJECT ADDRESS**  
 1000 S. W. 10TH AVENUE

**PROJECT CITY**  
 MIAMI, FL

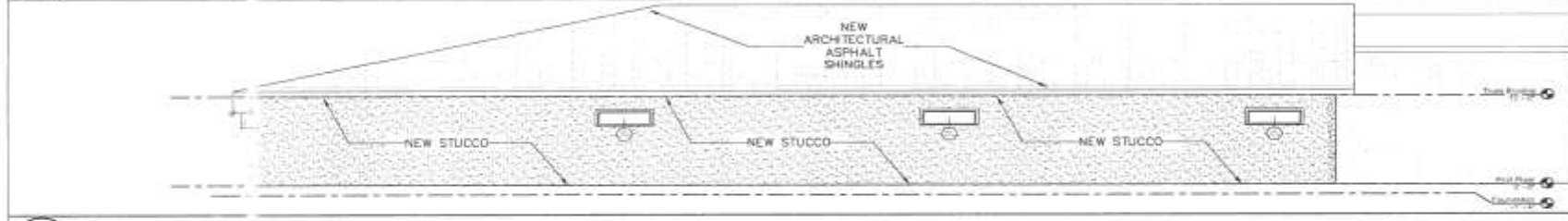
**PROJECT STATE**  
 FLORIDA

**PROJECT ZIP**  
 33135

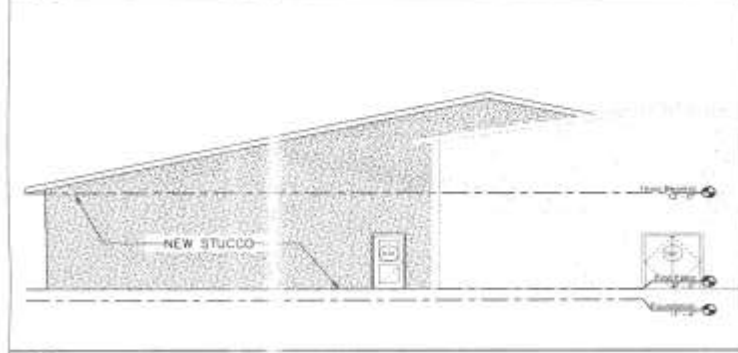
**PROJECT SHEET**  
 C-04



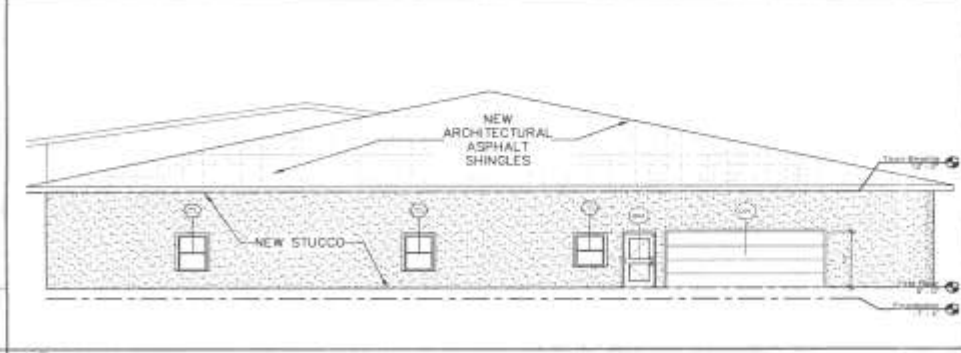
1 North  
A-200  
Scale: 3/16" = 1'-0"



2 South  
A-200  
Scale: 3/16" = 1'-0"



3 East  
A-200  
Scale: 3/16" = 1'-0"



4 WEST  
A-200  
Scale: 3/16" = 1'-0"

**C. A. G. Caribeno Architectural Group, Inc.**

1900 W. PALM BLVD. SUITE 100  
MIAMI, FL 33144  
PHONE: 305.442.4444  
FAX: 305.442.4444

FLORIDA LICENSE NO. 11717-11

WE HEREBY CERTIFY THAT THE DESIGN AND CONSTRUCTION OF THIS PROJECT HAS BEEN REVIEWED AND APPROVED BY A LICENSED ARCHITECT AS REQUIRED BY THE FLORIDA ARCHITECTURAL ACT, CHAPTER 481, F.S. AND THE FLORIDA BOARD OF ARCHITECTURE, 1100 N. W. 11TH AVENUE, SUITE 100, MIAMI, FL 33136. THE ARCHITECT'S REVIEW IS LIMITED TO THE TECHNICAL ASPECTS OF THE DESIGN AND CONSTRUCTION OF THIS PROJECT AND DOES NOT CONSTITUTE A GUARANTEE OF THE ACCURACY OR COMPLETENESS OF THE INFORMATION PROVIDED HEREON. THE ARCHITECT'S REVIEW IS LIMITED TO THE TECHNICAL ASPECTS OF THE DESIGN AND CONSTRUCTION OF THIS PROJECT AND DOES NOT CONSTITUTE A GUARANTEE OF THE ACCURACY OR COMPLETENESS OF THE INFORMATION PROVIDED HEREON.

Owner

PROJECT NAME: NANA'S HOUSE  
Client: NANA'S HOUSE

Elevations

NO.	DESCRIPTION	DATE

Scale: 3/16" = 1'-0"

A-200

DATE: 08-20-2019





## Final Thoughts from the Director – Kim Frodge

If the Lord puts something on your heart - if it is in the mission field here or abroad – **DO IT!**

IT MAY SEEM HARD OR EVEN SCARY – **BUT GOD can make it incredible if you trust HIM!**

IF YOU ARE IN THE MIDDLE OF GOD’S WILL, YOU WILL HAVE AN UNIQUE OPPORTUNITY TO BE USED IN AN AMAZING WAY!

**BE THE HANDS AND FEET OF JESUS!**

# Thank You to tonight's sponsors!!

## FAITH

- *Exchange Club of Sebastian*
- *Josh and Lauren Ranew*
- *Miller Fabrication International*

## LOVE

- *River Rocks Dockside restaurant*

## JOY

- *Dave's Plumbing & Drain Cleaning, Inc*
- *Jenny & Jim Mountjoy*
- *Cameron Mitchell – Edward Jones*

## HOPE

- *Top Notch Lawn Care, LLC*
- *Heller Cabinetry*
- *Gittr Done*
- *Slug A Bug*
- *One Group*
- *Eric the Gas Man*
- *Carol & David Ashwell*

## COMPASSION

- *Countryside Landscape*
- *Highway 1 Band & John McDonald Music*
- *Rockledge Rotary Foundation Inc*
- *CCS Services*